

STATE OF NORTH CAROLINA
DEPARTMENT OF TRANSPORTATION

SIGNING PLAN
HAYWOOD COUNTY

LOCATION: SR 1212 (JOHNSON BRANCH RD) OVER CAMPBELL CREEK

PROJECT REFERENCE NO.
DF18314.2044195


SHEET NO.
SIGN-1



DOCUMENT NOT CONSIDERED FINAL
UNLESS ALL SIGNATURES COMPLETED

401

QUANTITY REQ'D _1_



30 X 30
R1-1

ONE "U" POST

ROADWAY STANDARD DRAWING

THE FOLLOWING ROADWAY STANDARDS AS APPEAR IN "ROADWAY STANDARD DRAWINGS" - PROJECT SERVICES UNIT - N.C. DEPARTMENT OF TRANSPORTATION - RALEIGH, N.C., DATED JANUARY 2024 ARE APPLICABLE TO THIS PROJECT AND BY REFERENCE HEREBY ARE CONSIDERED A PART OF THESE PLANS:

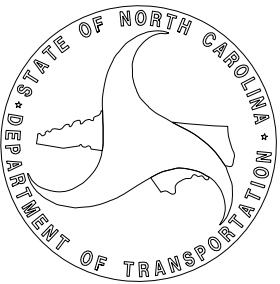
STD. NO.	TITLE
904.10	ORIENTATION OF GROUND MOUNTED SIGNS
904.50	MOUNTING OF TYPE 'D', 'E' AND 'F' SIGNS ON 'U' CHANNEL POSTS

SUMMARY OF QUANTITIES

ITEM NO.		ITEM DESCRIPTION	QUANTITY	UNIT
DESC. NO.	SECT. NO.			
4072000000	903	SUPPORTS, 3 LB STEEL U-CHANNEL	13	L.F.
4102000000	904	SIGN ERECTION, TYPE E	1	EA.
4116100000	904	SIGN ERECTION, RELOCATE SIGN TYPE E	1	EA.
4155000000	907	DISPOSAL OF SIGN SYSTEM, U-CHANNEL	1	EA.
4192000000	907	DISPOSAL OF SUPPORT, U-CHANNEL	1	EA.
4238000000	907	DISPOSAL OF SIGN, D, E OR F	4	EA.

PLAN SUBMITTED TO: N.C.D.O.T. HIGHWAY DIVISION 14

ZACH SHULER, P.E. HIGHWAY DIVISION 14 BRIDGE PROGRAM MANAGER



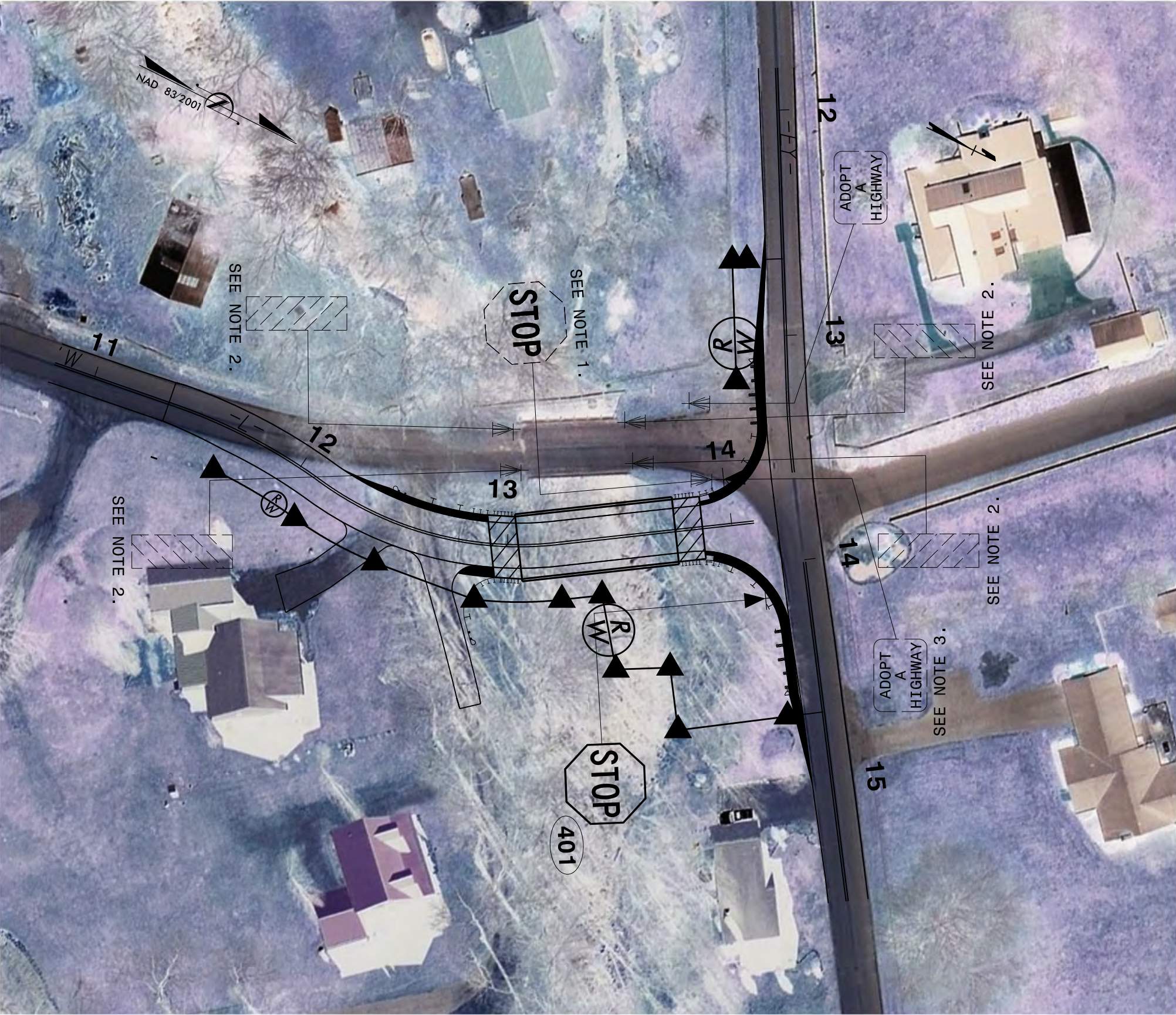
PLAN PREPARED BY: HDR ENGINEERING, INC. OF THE CAROLINAS

MIKE RZEPKA, P.E. SIGNING & DELINEATION PROJECT DESIGN ENGINEER

RICHARD DRAYTON SIGNING & DELINEATION PROJECT DESIGN TECHNICIAN



HDR Engineering, Inc. of the Carolinas
555 Fayetteville St, Suite 900 Raleigh, N.C. 27601
N.C.B.E.L.S. License Number: F-0116



GENERAL NOTES

- . SIGNS FURNISHED BY STATE
- . CONFIRM IN WRITING AT LEAST 4 MONTHS IN ADVANCE, THE ACTUAL DATE THE DEPARTMENT FURNISHED SIGNS WILL BE REQUIRED.
- . IF REMOVAL OR RELOCATION OF SIGNS ON PRIVATE STREET (NON-STATE MAINTAINED) IS REQUIRED DUE TO CONSTRUCTION, THE CONTRACTOR SHALL INFORM THE ENGINEER. THE WORK WILL BE COMPLETED BY OTHERS.
- . WHEN NOT STATIONED OR DIMENSIONED ON PLANS, ALL 'E' AND 'F' SIGNS SHALL BE FIELD LOCATED BY THE ENGINEER
- . ALL EXISTING SIGNS ON "U" CHANNEL POST WITHIN THE PROJECT LIMITS SHALL BE REMOVED AND DISPOSED OF UNLESS OTHERWISE NOTED ON PLANS.
- . WHEN EXISTING SIGNS ARE REMOVED AND INSTALLED ON NEW SUPPORTS, THE RE-ERECTION SHALL IMMEDIATELY FOLLOW THE REMOVAL.
- . THE BACKGROUND FOR TYPE E & F SIGNS SHALL BE TYPE C REFLECTIVE SHEETING.
- . SEE ROADWAY PLANS FOR GUARD/GUIDE RAIL DETAILS.

PROJECT NOTES

- 1.) DISPOSAL OF SIGN SYSTEM, U-CHANNEL
- 2.) DISPOSAL OF SIGN, D, E OR F
- 3.) RELOCATE SIGN, TYPE E